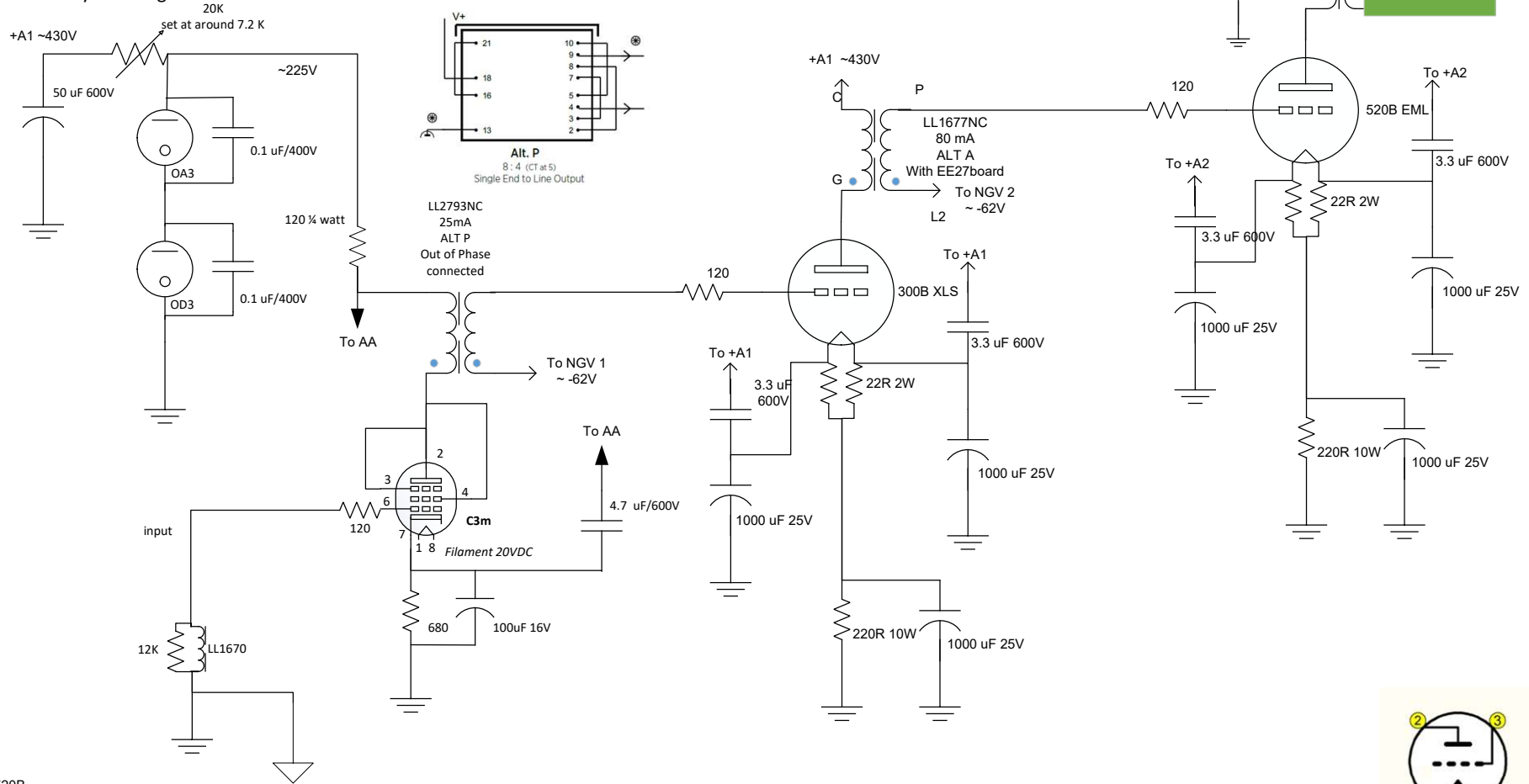
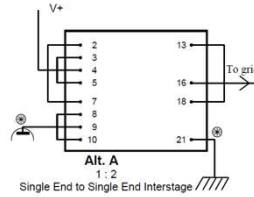


Note: Initial startup,  
NO tubes should be in their sockets.  
Put voltage on the grid voltage transformer only and adjust both voltages on the grid pin to around -62V.  
Switch off the power to the grid voltage transformer.  
Connect all transformers now. Put all tubes in and switch the amp on, fine tune the grid voltage after to your liking.

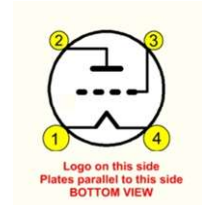


Settings 520B

Voltage	14	15	16	17	18	19	20	21	22	23	24	25	26	27	28	29	30
Current in mA	63.6	68.2	72.7	77.3	81.8	86.4	90.9	95.5	100.0	104.5	109.1	113.6	118.2	122.7	127.3	131.8	136.4
Approx Wattage	24.9	26.6	28.3	30.0	31.7	33.3	35.0	36.7	38.3	39.9	41.6	43.2	44.8	46.4	48.0	49.6	51.1

Settings 300B XLS

Voltage	8	9	10	11	12	13	14	15	16	17	18	19	20	21	22	23	24
Current in mA	36.4	40.9	45.5	50.0	54.5	59.1	63.6	68.2	72.7	77.3	81.8	86.4	90.9	95.5	100.0	104.5	109.1
Approx Wattage	15.2	17.0	18.9	20.7	22.5	24.3	26.2	28.0	29.7	31.5	33.3	35.1	36.8	38.6	40.3	42.0	43.7



SAKUMA Power Amp no Capacitor using 300BXLS driver

Revision date: Saturday, February 10, 2024 @ 15:51

520 B 300 B XLS or 300B Mesh EML siemens C3m.vsdX

Robbert H. ter Haar

Page 2 of 3